

Matchstick INIBOX Device Startup Guide (Group Control Software and Management Console)

1. Dead Work

1.1 Method 1: Use the INIBOX Mining Pool Control Tool

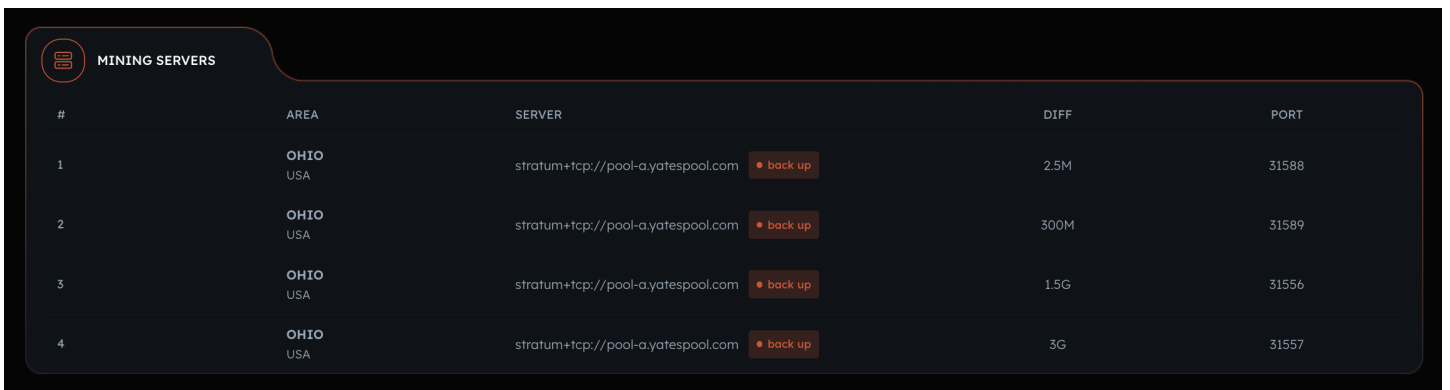
- Features: Multi-unit group control
- Version: v 1.2
- Date: 2025/06

1.2 Method 2: INIBOX Mining Machine Web Management Console

- Features: Easy and quick single-machine management
- Log in to the admin panel: "INIBOX device IP" + ":26666"

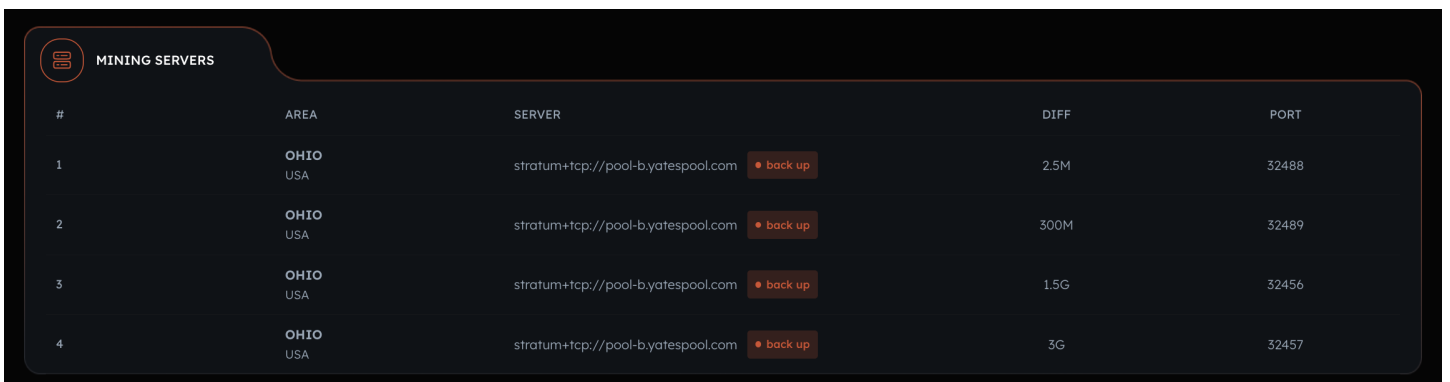
1.3 Available Mining Pools

Yatespool mining pool is now supported. Visit the official website: <https://yatespool.com>



A screenshot of a web interface titled "MINING SERVERS" showing a table of mining servers. The table has five columns: #, AREA, SERVER, DIFF, and PORT. There are four rows of data, all for "OHIO USA" servers connected to "stratum+tcp://pool-a.yatespool.com". Each row has a "back up" button next to the SERVER column. The DIFF values are 2.5M, 300M, 1.5G, and 3G. The PORT values are 31588, 31589, 31556, and 31557.

#	AREA	SERVER	DIFF	PORT
1	OHIO USA	stratum+tcp://pool-a.yatespool.com back up	2.5M	31588
2	OHIO USA	stratum+tcp://pool-a.yatespool.com back up	300M	31589
3	OHIO USA	stratum+tcp://pool-a.yatespool.com back up	1.5G	31556
4	OHIO USA	stratum+tcp://pool-a.yatespool.com back up	3G	31557



A screenshot of a web interface titled "MINING SERVERS" showing a table of mining servers. The table has five columns: #, AREA, SERVER, DIFF, and PORT. There are four rows of data, all for "OHIO USA" servers connected to "stratum+tcp://pool-b.yatespool.com". Each row has a "back up" button next to the SERVER column. The DIFF values are 2.5M, 300M, 1.5G, and 3G. The PORT values are 32488, 32489, 32456, and 32457.

#	AREA	SERVER	DIFF	PORT
1	OHIO USA	stratum+tcp://pool-b.yatespool.com back up	2.5M	32488
2	OHIO USA	stratum+tcp://pool-b.yatespool.com back up	300M	32489
3	OHIO USA	stratum+tcp://pool-b.yatespool.com back up	1.5G	32456
4	OHIO USA	stratum+tcp://pool-b.yatespool.com back up	3G	32457

- For stable network environment of the device, choose stratum+tcp: [//pool-a.yatespool.com: 31557](https://pool-a.yatespool.com:31557) or stratum+tcp: [//pool-b.yatespool.com: 32457](https://pool-b.yatespool.com:32457)
- The network of the device operating environment is not so stable. The priority is stratum+tcp: [//pool-a.yatespool.com: 31556](https://pool-a.yatespool.com:31556) and stratum+tcp: [//pool-b.yatespool.com: 32456](https://pool-b.yatespool.com:32456)

2. Start Steps

2.1 Start the Machine

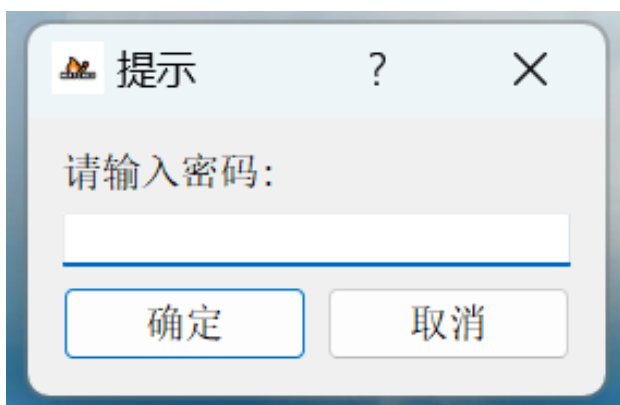
Connect the power supply with 36-pin ports, plug in the network cable, and power on the device. Wait one minute. If the blue light on the front panel stays on, the device has started.

2.2 Start the machine with the group control tool

2.2.1 Open IniBox.exe V 1.2

[iniBox.exe v1.2] Download link: pub-e0730ff051e446618fc9f1ef1b891049.r2.dev/iniBox_tool_V1.2.exe

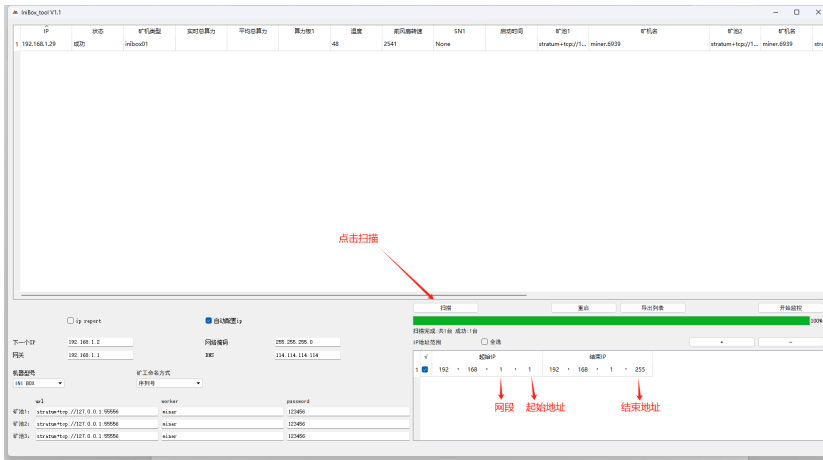
Double-click to open the tool and enter the password: inibox



2.2.2 Scan the Server IP

Change the start and end IP addresses, then click [Scan] to begin scanning.

Note: The computer IP and the machine IP must be on the same LAN; otherwise, scanning will not work.

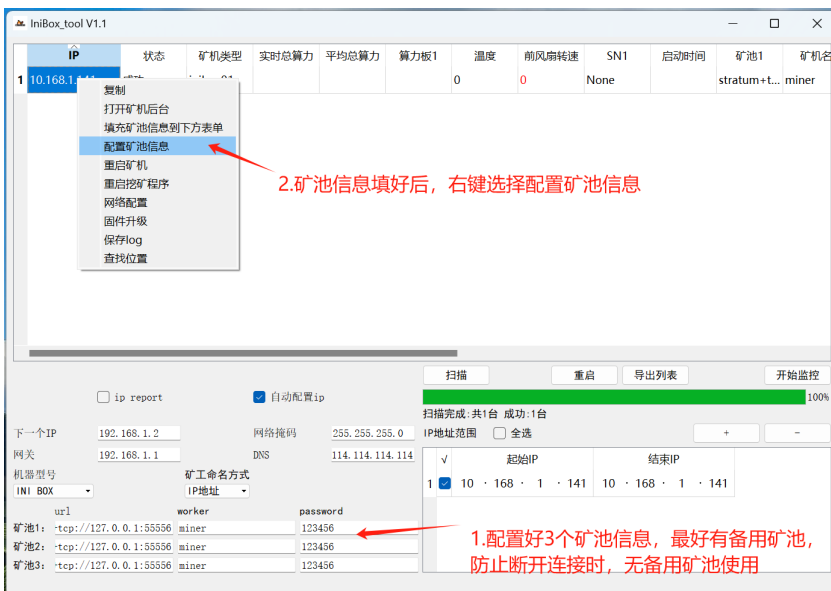


2.2.3 Configure Mining Pools and Machines

Enter the URL (mining pool address), worker (wallet address + . + custom name), and password in sequence. Right-click the IP address, select Configure Mining Pool, and wait approximately 6 minutes for the configuration to complete.

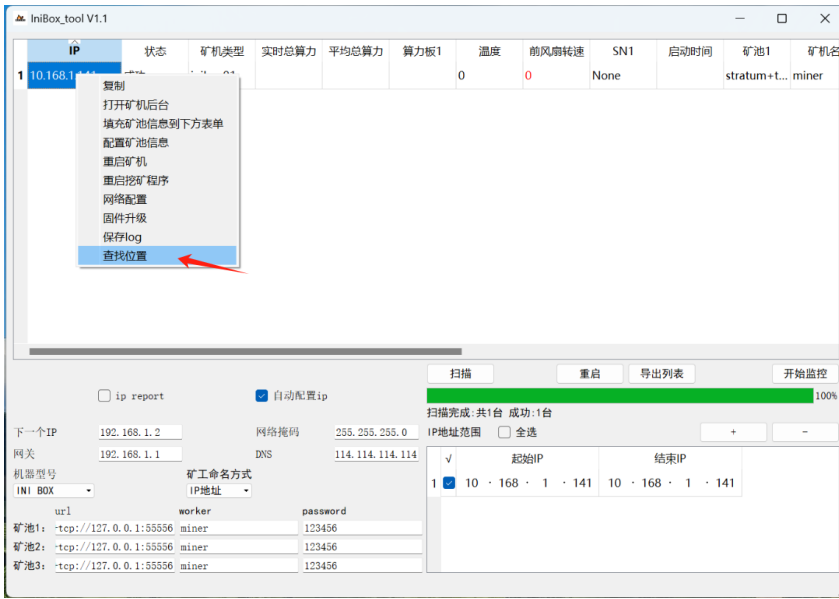
Use this tool or the web management console to monitor the machine's status.

- The network of the device operating environment is stable. The priority address of the mining pool is `stratum+tcp://pool-a.yatespool.com: 31557` and `stratum+tcp://pool-b.yatespool.com: 32457`
- The network of the device operating environment is not so stable. The mining pool address should be `stratum+tcp://pool a.yatespool.com: 31556` and `stratum+tcp://pool-b.yatespool.com: 32456`

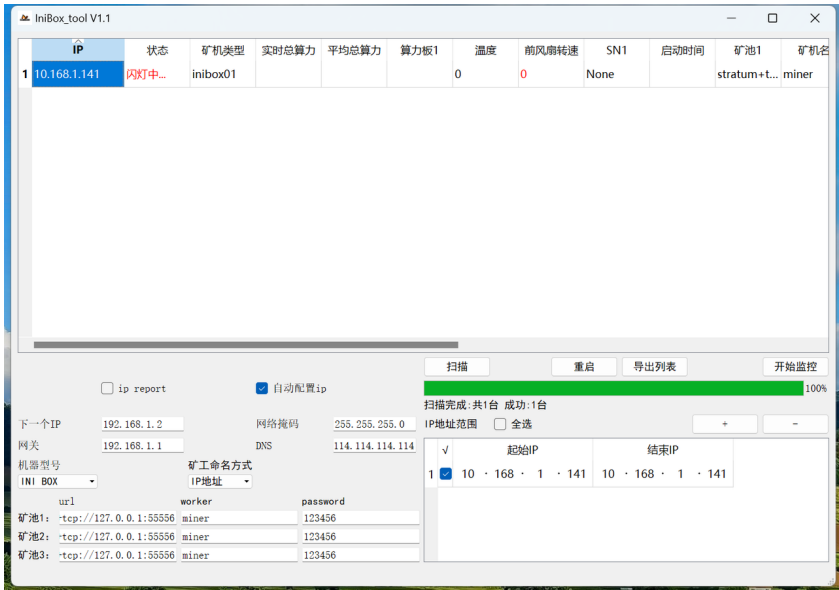


2.2.4 To Locate the Physical Location of the Mining Machine

Select the device you want to find, right-click and select Find Location, then click OK.



After confirmation, the software will display 'Flashing...' while the blue indicator light behind the mining machine flashes.

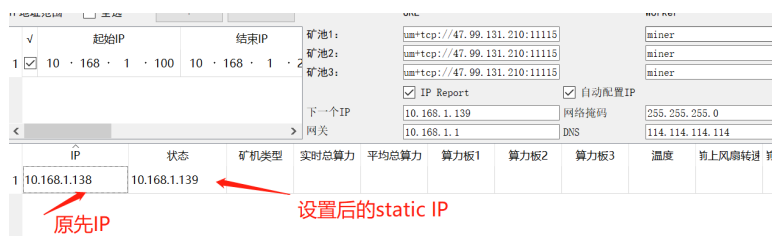


2.2.5 To Set a Static IP

- In the IP report, select "√" and enter the IP address, subnet mask, gateway, and DNS in sequence.

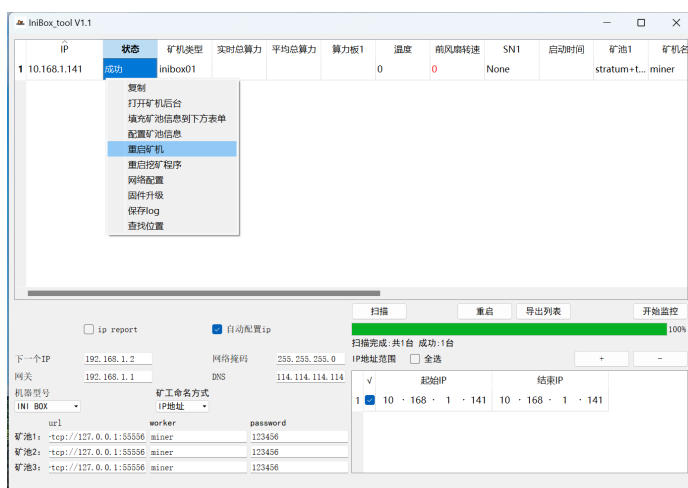


- Hold the IP button on the control panel for 5 seconds. The scanning tool will display the original IP and the modified static IP. Change the network format to static, then continue configuring the next machine. Repeat step 2, and the IP will automatically increase by 1.



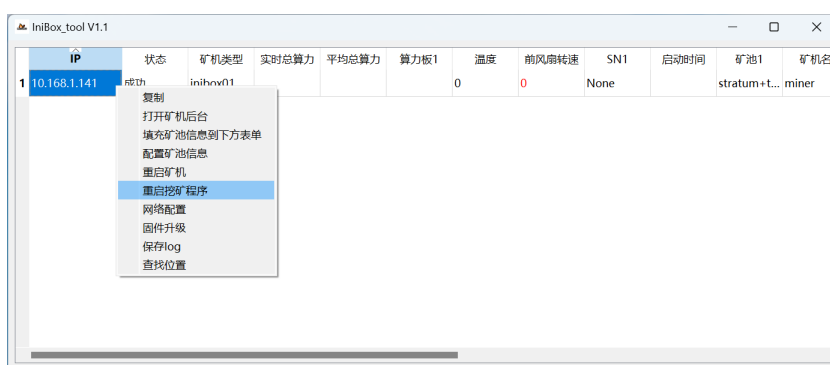
2.2.6 Restart the Machine

Select the machine to restart, right-click it, enter the password "inbox", and click OK.



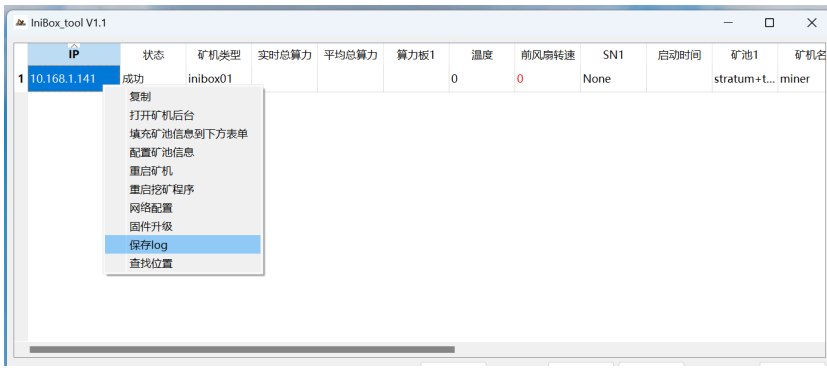
2.2.7 Restart the Mining Program

Select the mining machine requiring restart, right-click to initiate the process, enter the password "inbox" and confirm. This method works when a mining node shows no computational power.



2.2.8 To Save the Log

Select a machine, right-click to view logs, and choose Save Log to save them locally.



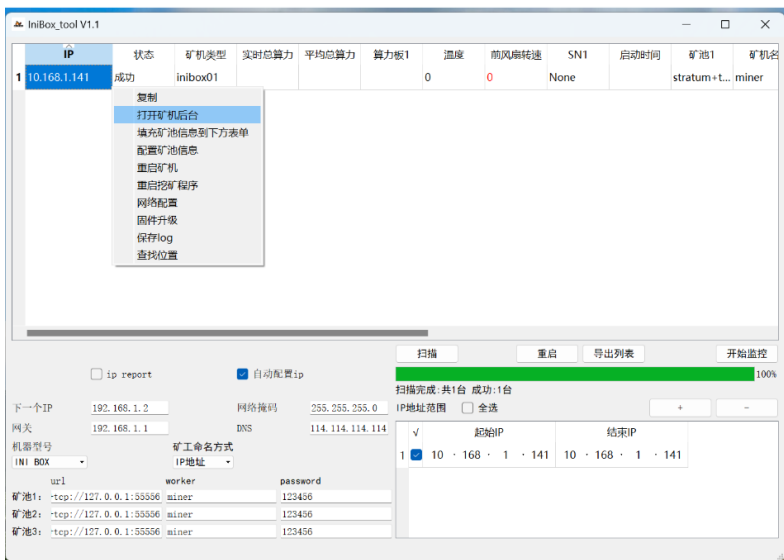
2.2.9 Naming Method of Miner Number

When configuring worker miner IDs, suffixes can be automatically generated using IP addresses (last two digits), motherboard serial numbers (last six digits), or custom/unchanged methods.

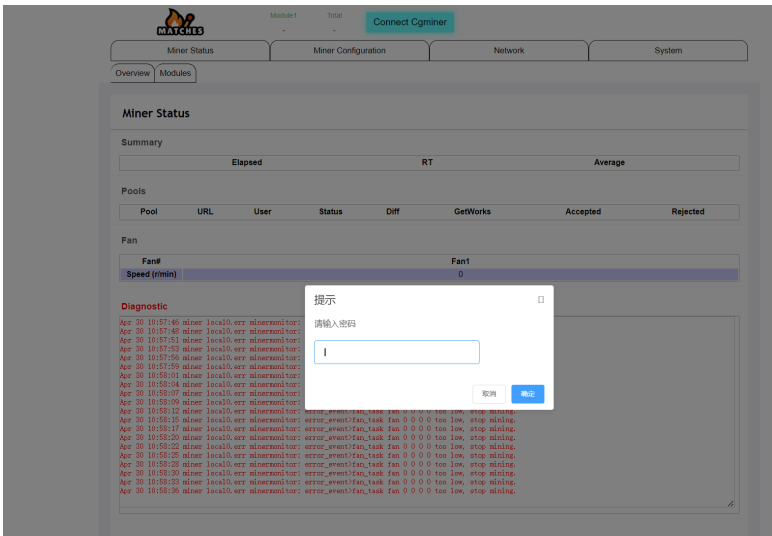


2.2.10 Open the Web Management Console Through the Group Control Software

Method 1: Select one or more mining machines, right-click to open the mining machine backend, then left-click to confirm. Method 2: Double-click the corresponding IP address.



After confirmation, the webpage for the corresponding IP will open. Enter the password "inbox" to view real-time data including computing power, temperature, and fan status.



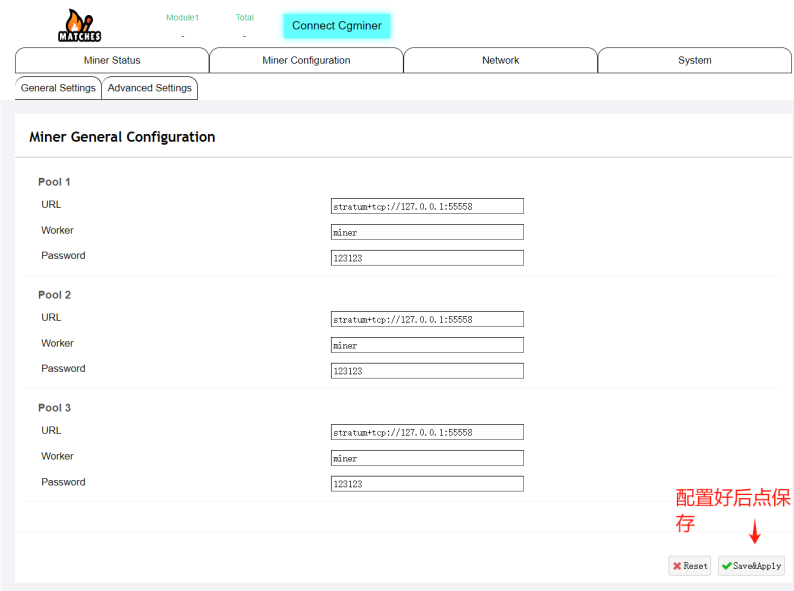
2.3 Start the Machine Directly Through the Web Management Console

Note: The computer IP and the machine IP must be on the same LAN, otherwise the background cannot be opened.

Log in to the browser's admin panel by entering the following link: "INIBOX device IP" + ":26666".

Enter the URL (mining pool address), worker (wallet address + . + custom name), and password in sequence. Click Save&Apply and wait about 6 minutes for the configuration to complete.

- The network of the device operating environment is stable. The priority address of the mining pool is [stratum+tcp://pool-a.yatespool.com: 31557](https://stratum+tcp://pool-a.yatespool.com:31557) and [stratum+tcp://pool-b.yatespool.com: 32457](https://stratum+tcp://pool-b.yatespool.com:32457)
- The network of the device operating environment is not so stable. The mining pool address should be [stratum+tcp://pool a.yatespool.com: 31556](https://stratum+tcp://pool-a.yatespool.com:31556) and [stratum+tcp://pool-b.yatespool.com: 32456](https://stratum+tcp://pool-b.yatespool.com:32456)



2.3.1 You Can Adjust the Machine's Running Frequency in the Web Background (only Downscaling Is Supported).

